

# SETTINGS - How to Import a 3rd party implant kit

## SETTINGS - How to Import a 3rd party Implant Kit

*Content by: Adrien Crouzet*

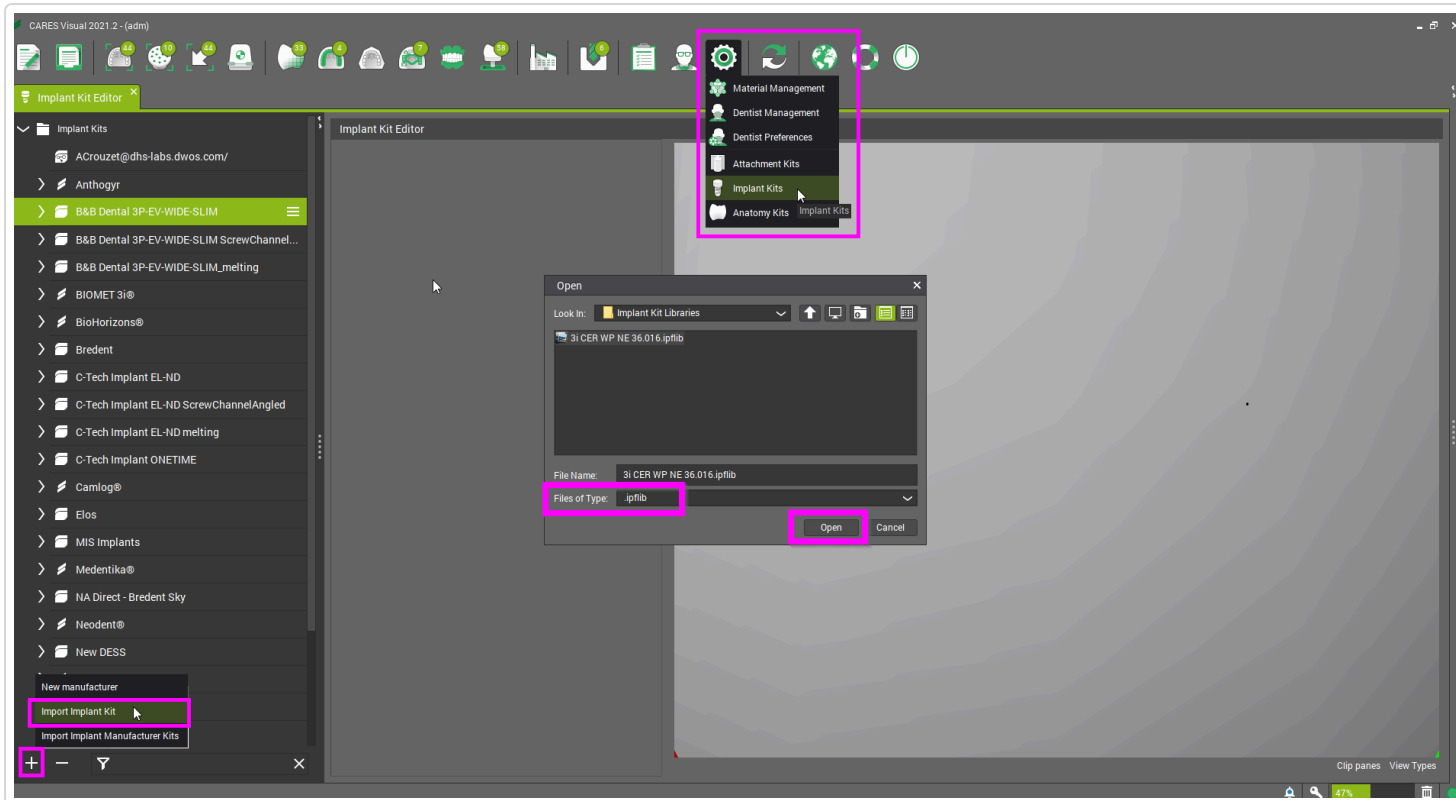
*Approved by: Cecile Peyrot*

*Last Update: 2/2/2023*

When you want to **add a 3rd party implant kit**, there are 2 options.

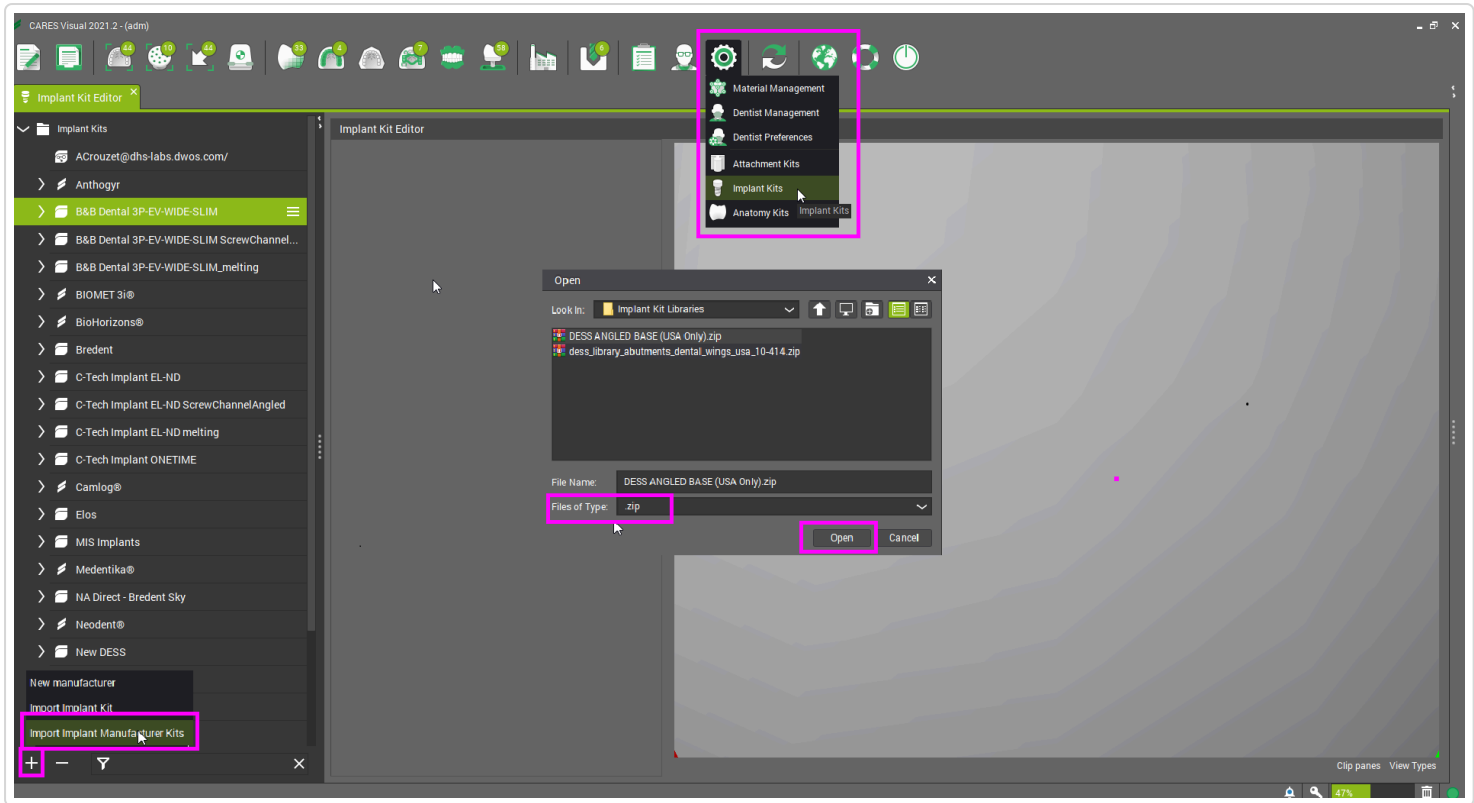
- If you have one specific implant kit to add, a **.ipflib** file, Open the **Implant Kit Editor**, click on the "+" icon on the left bottom corner and click on **Import Implant Kit**. Now select the **.ipflib** file and **open** it.

Tips: if you have multiple **.ipflib** to add you can select them all here



- If you have an Implant Manufacturer Kits, a .zip file, Open the **Implant Kit Editor**, click on the "+" icon on the left bottom corner, and click on **Import Implant Manufacturer Kits**. Now select the .zip file and **open** it.

Tips: if you have multiple .ipflib to add you can select them all here



Did this answer your question? 😊 ☹️

*Last updated on February 2, 2023*

© Dental Wings Inc. (<https://dwos.helpscoutdocs.com/>) 2024. Powered by Help Scout ([https://www.helpscout.com/knowledge-base/?co=Dental+Wings+Inc.&utm\\_source=docs&utm\\_medium=footerlink&utm\\_campaign=Docs+Branding](https://www.helpscout.com/knowledge-base/?co=Dental+Wings+Inc.&utm_source=docs&utm_medium=footerlink&utm_campaign=Docs+Branding))